



find out

if your fallopian tubes are open
by your physician in the office

femVue™



Knowing means *Everything*

There are an estimated 10 million women in the United States requiring a fallopian tube assessment, including 10-15% of couples of reproductive age that are infertile. Because fallopian tube blockage or occlusion is the most common cause of female infertility, an evaluation of the fallopian tubes is an integral part of investigating female infertility factors. One of three infertile women have some degree of tubal blockage in one or both tubes.

The most commonly performed procedure to determine fallopian tube patency (open) is a fluoroscopic hysterosalpingogram (HSG). This method consists of filling the entire uterine cavity and fallopian tubes with radiopaque (x-ray) dye allowing for fluoroscopic imaging. The concerns related to this procedure include radiation exposure, risk of allergic reactions to the radiopaque dye, and it is often performed in a medical imaging center by someone unfamiliar with your medical history.

A Sono HSG may be an ideal screening tool as it utilizes ultrasound equipment in a gynecologist's office and saline and air infusion instead of radiopaque (x-ray) dye. It is universally recognized that an office-based method to assess the fallopian tubes would be a significant advancement in infertility evaluation.

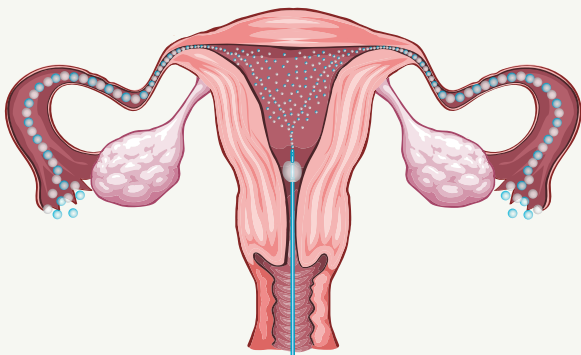


How

Sono HSG with FemVue works

Sono HSG with FemVue provides a safe, simple, and convenient diagnostic procedure that is performed by your gynecologist or infertility specialist.

FemVue works by introducing a non-allergenic, ultrasound visible combination of saline and air into the fallopian tubes, allowing your physician to provide you with immediate results of the procedure.



Advantages

of Sono HSG with FemVue

Convenient

Allows for your fallopian tubes to be evaluated in your physician's office.

Safe

Eliminates exposure to radiation and potentially allergenic x-ray dye.

Time Efficient

Usually performed in 15 minutes or less.

No Referral

Procedure is performed by your physician.

Immediate Feedback

Knowing means you can plan your next steps sooner.

Cost Effective

About 1/3 the cost of a traditional tubal evaluation procedure.



frequently asked questions

How important is evaluating my fallopian tubes if I am infertile?

According to the recommendations of the American Society for Reproductive Medicine, "evaluation of tubal patency is a key component of the diagnostic workup in infertile couples", in addition to a careful history and physical examination, objective evaluation of ovulatory function, and examination of the uterine cavity.*

Can the Sono HSG procedure with FemVue be performed at any time of the month?

It is important that you are not pregnant at the time of the procedure. To reduce the chance of performing the procedure when you may be unknowingly pregnant, your procedure will be scheduled during the first half of your menstrual cycle.

Will I be given anything for possible discomfort during the procedure?

Your physician may give you anti-inflammatory medicine before the procedure to reduce possible mild cramping or discomfort.

What can I expect to learn from the Sono HSG procedure with FemVue?

Most women learn whether their fallopian tubes are open by the end of the procedure.

* The Practice Committee of the American Society for Reproductive Medicine. Optimal evaluation of the infertile female. *Fertility and Sterility*. 2006; 86(4): S264-S267.

Sono HSG Appointment

Please contact your physician's office on the
FIRST DAY of your menstrual cycle.

The procedure is performed during the
interval between the end of the
menstrual period and ovulation.

Date:

Time:

AM PM

Doctor's Name:

Location:

Phone:

Pre-Procedure Instructions:

For more information about
FemVue please visit
www.mybubbleview.com

References:

WebMD website

Chandra A, Martinez GM, Mosher WD, Abma JC, Jones J.

Fertility, family planning, and reproductive health of U.S. women: Data from the 2002 National Survey of Family Growth.

National Center for Health Statistics. *Vital Health Stat* 23(25). 2005.

Exacoustos C., Zupi E., Szabolcs B., Amoroso C., Di Giovanni A., Romanini M., and Arduini D.

Contrast-Tuned Imaging and Second-Generation Contrast Agent SonoVue: A New Ultrasound Approach to Evaluation of Tubal Patency.

Journal of Minimally Invasive Gynecology. 2009; 16 (4): 437-444.